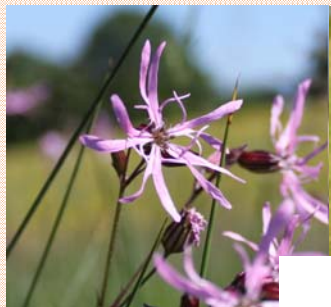


June Wildflowers Spotter's Sheet



Ragged Robin
Silene flos-cuculi

STAR FIND *

Once a common wild flower, it is now classed as near-threatened. It is particularly beloved by long-tongued bees.

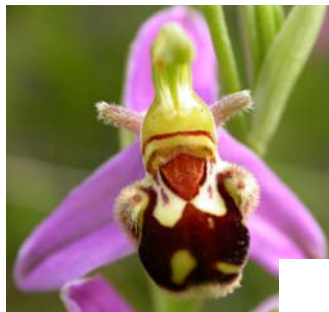
Where to find it:
Wetter woods & meadows



Agrimony
Agrimonia eupatoria

Also called 'church steeples' after its tall floral spikes. In Victorian times it symbolised "Thankfulness".

Where to find it:
Hedgebanks, roadsides



Bee Orchid
Ophrys apifera

In a clever ploy to attract pollinators, it not only looks like a bee, it also emits a female bee scent!

Where to find it:
Pastures, banks, chalk



Common Poppy
Papaver rhoeas

Poppy seeds only sprout when the earth around them is disturbed, hence why so many grew on the battlefields of WWI.

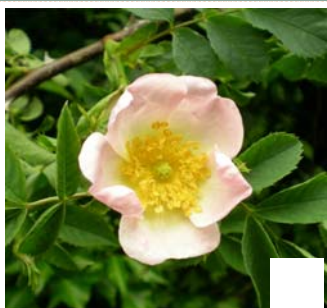
Where to find it:
Disturbed ground



Common Spotted-orchid
Dactylorhiza fuchsii

Our commonest orchid, as its name suggests. It can range in colour from deep lilac to light pink & even pure white.

Where to find it:
Alkaline grasslands



Dog-rose
Rosa canina

Syrup made from this wildflower's rosehips have twenty times as much Vitamin C as orange juice!

Where to find it:
Hedgerows



Foxglove
Digitalis purpurea

Its mottled markings were once thought to be the handprints of fairies. A single 'glove' can produce a million seeds.

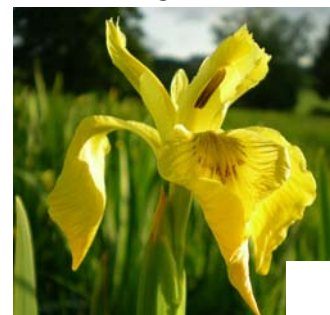
Where to find it:
Woods and banks



Oxeye Daisy
Leucanthemum vulgare

Often in bloom around the summer solstice. If cattle eat it, it can affect the flavour of their milk.

Where to find it:
Grassy verges



Yellow Iris
Iris pseudacorus

Also known as 'Yellow Flag', it grows where water runs shallow - hence it can indicate the presence of a ford.

Where to find it:
Damp soil, water margins



Yellow Rattle
Rhinanthus minor

Great for wildflower meadows as it restricts the growth of grasses by feeding off their nutrients.

Where to find it:
Grassy banks